

technical rider (int)

production:

WASCO!

producer: **hetpaleis**
address: Meistraat 2
postal code and place: 2000 Antwerpen, Belgium
phone: +32 3 202 83 00
email: info@hetpaleis.be

producer: **Voetvolk**
address: Begijnenstraat 19-21
postal code and place: 2800 Mechelen, Belgium
phone: 0032 485 434 787 (Louise Raes - Company Manager)
email: louise@voetvolk.be

direction: Lisbeth Gruwez & Maarten Van Cauwenberghe
choreography: Lisbeth Gruwez
sound design: Maarten Van Cauwenberge
lighting design: Stef Stessel - Dirk De Hooghe
set design: Stef Stessel
kostuumontwerp: —

contact:

Els Selleslach
technical production manager
+32 499 13 10 13
els.selleslach@hetpaleis.be



©Steven Brys

1. general info

hetpaleis will bring **3** technicians, please provide minimum **3** technician (1 stage, 1 lighting, 1 sound);

set-up: **6** h;

strike down: **3** h.

Arrival performers & assistants children(14): **5** h prior to the performance.

Length of the performance: **60** minutes

There is no intermission, and latecomers will not be allowed to enter the auditorium.

Transport

Please organise transport for material and people from the airport to the venue.

Facilities:**The venue provides:**

- **on stage:**
 - black box dressing rooms (500W x 125D x 200H cm)
 - 6 headsets (3 stage, 3 auditorium)

- **backstage:**
 - tables (4m) with protection cover to prepare paint and props
 - 3 separate dressing rooms en 1 big dressing room for a group of 10 performers & 3 assistants
 - toilet and showers
 - towels and bathrobes
 - coffee, tea and water
 - fresh fruit and snacks

Catering:

The venue provides 3 healthy lunches (during build-up) or 17 healthy lunches (when performances in the afternoon) and 17 healthy warm meals (crew+cast+assistants). Details about special diets/wishes and exact numbers will be provided later.

2. stage (see stage plot)

Set:

The set consists of a floor of white flame retardant plastic (12m x 12m).

A flame retardant transparent plastic canvas (7mx5m) is used as a canvas for live action painting during the performance (wasco's, oil pastel crayons and poster paint).

At the end of the performance this plastic canvas is mounted to a metal tube with VELCRO-tape and lifted as a backdrop using two hoists.

The two hoists (250kg) are operated during the performance by the stage manager on stage.

On stage, a scaffold, a ladder, 3 foam blocks, and a flight case are set up:

- scaffold: 200L x 60W x 200H cm;
- A-ladder: 180H cm;
- foam blocks (100L x 100W x 40D cm), placed horizontally and vertically

2 dressing rooms are set up in the wings for use during the performance.

The company provides:

- plastic floor and canvas

The venue provides:

- a performance area of at least W: 10 x D: 10 x H: 6 m
- **please consult in case of doubt; deviations must be discussed in advance -**
- black floor: in case the floor is not black, the venue provides taped black marley
- blacks: open stage, possibly with black backdrop (in consultation with the company)

- scaffold with wheels : 200L x 60W x 200H cm
- A-ladder: 180H cm
- 3 styrofoam blocks: 100L x 100B x 40D cm
- 3 black buckets
- 3 rolls masking tape (5cm)/performance
- 2 rolls pink Gaffer (5cm)/performance
- sufficient white towels on stage (minimum 6 for the set)
- black aluminum Tube 7,5m
- 2x doughty clamps with ring for hanging tube
- 2x short round slings
- 2 hoists 250kg (e.g. Verlinde VL5 2516 B1)
- easily accessible water connection and hose (for cleaning)
- cleaning machine e.g. <https://taski.com/taski-products/swingo-455/>
- at least 2 floor wipers and mops and other cleaning material

3. lighting (see lighting plot)

The company provides:

- GrandMA2 on PC

The venue provides:

- Lighting material according to the lighting plot
 - o 2x Fresnel 1kW with barndoor
 - o 4x Fresnel 2 kW with barndoor
 - o 6x PAR64 cp 62 1kW
 - o 8x PAR64 cp 61 1kW
 - o 14x PC 1kW met barndoor
 - o 2x Profile DW 1kW
 - o 8x Profile DS 2kW
 - o 2x Arri HMI Fresnel 2,5kW with barndoor
 - o 2x shutter/dowser on dmx for HMI Fresnel
 - o 1x Fluorescent light 2x 35W/840
 - o 2x Led inspection light
https://www.diy.com/departments/diall-black-cfl-inspection-light-220-240v-180lm/1354685_BQ.prd
 - o 2x Robe LedBeam 150
 - o 4x Robe Profile T1
 - o colour filters: L152, L201, L202, L711, L728
- GrandMA2 pc-wing
- heat resistant black cloth for HMI
- 2x lighting towers H=1,5m
- 8x floor stands for PAR64
- 1,5m operating desk for the lighting technician next to the sound technician in the auditorium (preferably not underneath the balcony)

4. sound

The company provides:

- Akai APC controller and laptop with ableton

The venue provides:

- sound desk Allen & Heath SQ6
- a FOH in perfect condition
- 2x 12" of 15 " speakers hanging on steels (2m or more) according to the plan
- 2x monitors behind the proscenium opening Stage Right and Stage Left
- Surround or 2 speakers at the back of the auditorium
- 1,5m operating desk for the sound technician next to the lighting technician in the auditorium (preferably not underneath the balcony)
- 1 wireless handheld microphone

5. costumes

The venue provides::

- costume rack
- washing machine
- dryer
- Iron + ironing board

6. extra's

- proposed working schedule
- stage settings
- lighting plot
- stage plot
- risk assessment

Both the receiving organisation **hetpaleis/Voetvolk** operate in accordance with the most recent safety regulations. Risk assessment is available upon request.

The technical rider is part of the contract between **hetpaleis/Voetvolk** and the organising venue. The provisions of this rider must be followed in order to continue the performance. If exceptions need to be made for any reason, they must always be discussed with **hetpaleis/Voetvolk** in advance.

hetpaleis /Voetvolk reserves the right to make changes to the technical rider in function of the location (restrictions) and the transport options.

Proposed working schedule

1 or 2 performance day(s)

Day 1 Set-up

10:00-13:00: set-up: set, lighting, audio

13:00-14:00: lunch

14:00-16:00: set-up: set, lighting, audio

18:00-19:00: dinner

19:00-22:00: set-up: set, lighting, audio

Day 2 Performance

10:00-13:00: technical adjustments: set, lighting, audio

13:00-14:00: lunch

14:00-17:00: performers on stage

17:00-18:00: dinner

18:00-18:50: last preparations (pre-set, stage cleaning, sound check, etc.)

18:55: house opens

19:00-20:00: performance 1

20:15-23:15: strike down and load in (except if two performances)

Day3 performance

10:00-13:00: technical adjustments: set, lighting, audio

13:00-14:00: lunch

14:00-17:00: performers on stage

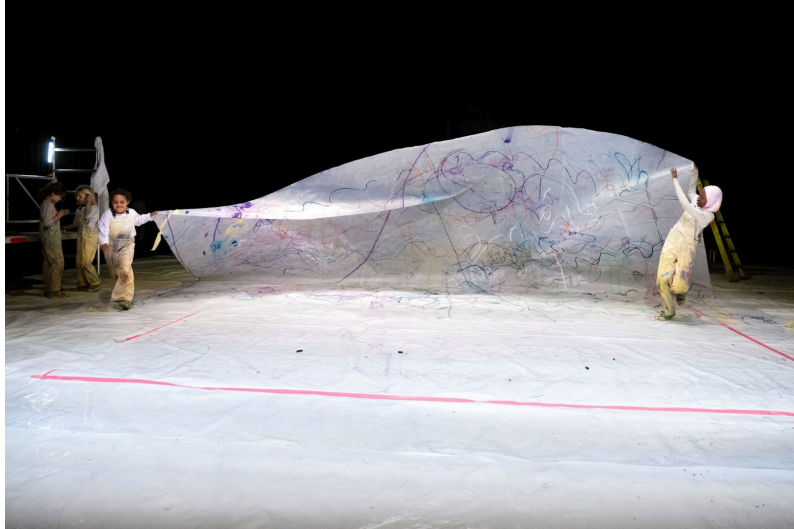
17:00-18:00: dinner

18:00-18:50: last preparations (pre-set, stage cleaning, sound check, etc.)

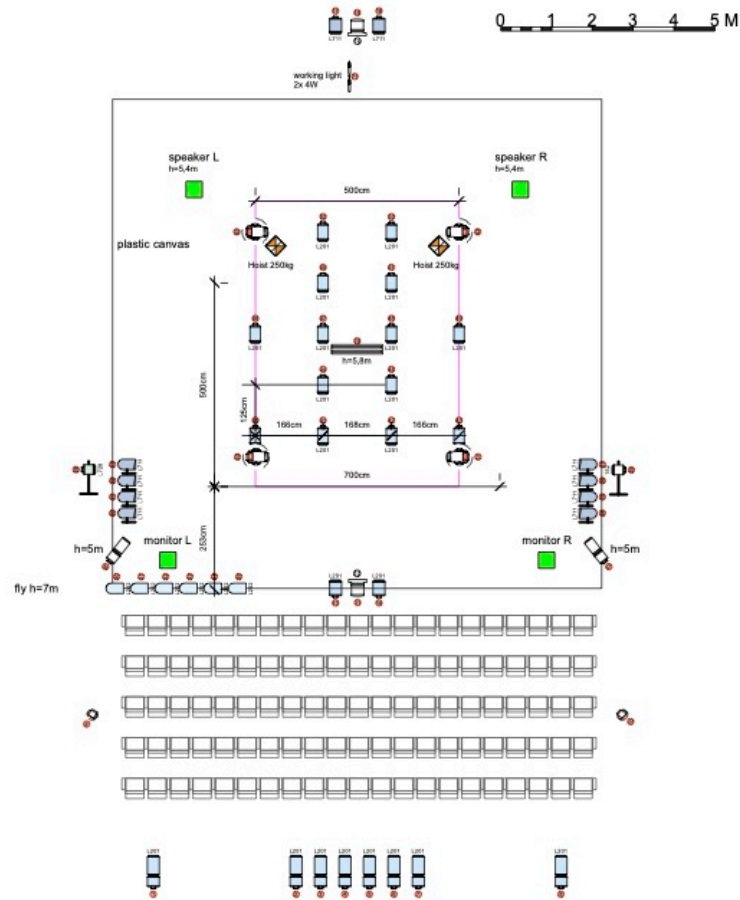
18:55: house opens

19:00-20:00: performance 2

20:15-23:15: strike down and load in

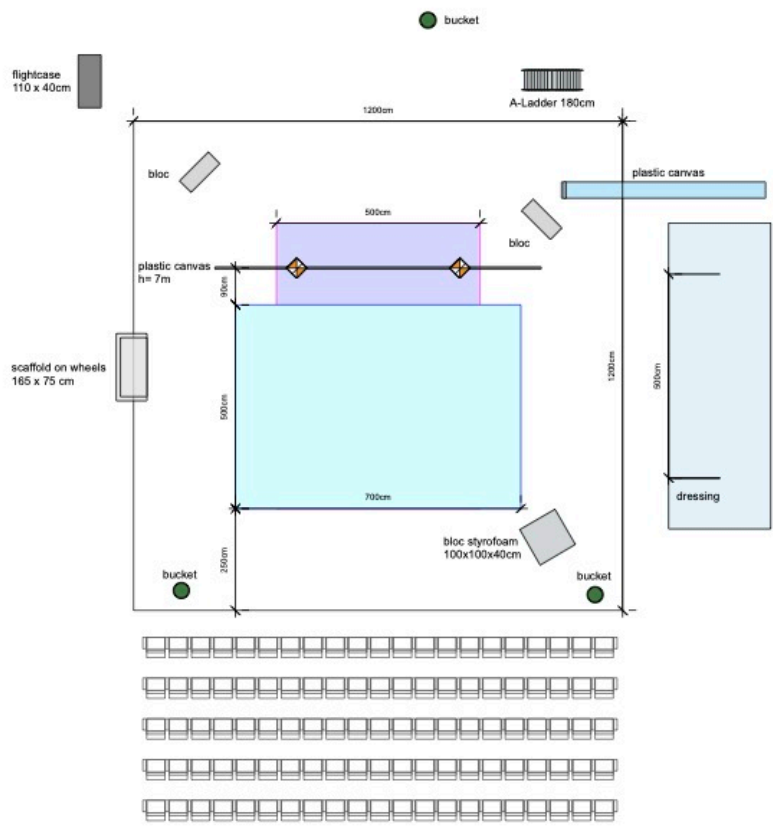



©DannyWillems



KEY	
	Fresnel 1 kW with Bamdoors
	Fresnel 2 kW with Bamdoors
	PAR54 cp52 1 kW
	PAR54 cp51 1 kW
	PC 1 kW with Bamdoors
	Profile DW 1 kW
	Profile 2 kW
	Arti HMI 2.5kW with Bamdoors + DMX shutter Downer
	Fluorescent light 2x 35W/840
	LED Working light 4xW
	ROBE LEDBeamx 150
	ROBE PROFILE T1

LIGHTING PLOT	
Production	WASCO!
Company	hetpaleis / Voetvolk
	Design: Stef Stessel / Dirk De Hooghe
	26/04/2024



STAGE PLOT	
Production	WASCO!
Company	hetpaleis / Voetvolk
	Design: Stef Stessel
	26/04/2024