

technical rider

production:

WASCO!

producer: **hetpaleis**
address: Meistraat 2
postal code and place: 2000 Antwerpen, Belgium
phone: +32 3 202 83 00
email: info@hetpaleis.be

producer: **Voetvolk**
address: Begijnenstraat 19-21
postal code and place: 2800 Mechelen, Belgium
phone: 0032 485 434 787 (Louise Raes - Company Manager)
email: louise@voetvolk.be

direction: Lisbeth Gruwez & Maarten Van Cauwenberghe
choreography: Lisbeth Gruwez
sound design: Maarten Van Cauwenberge
lighting design: Stef Stessel - Dirk De Hooghe
set design: Stef Stessel
kostuumontwerp: —

contact:

Steven Brys
stage manager
+32 486 27 80 41
steven.brys@hetpaleis.be

Bert Demeulenaere
stage manager
+32 494 41 97 75
hello@bertdemeulenaere.be

Els Selleslach
technical production manager
+32 499 13 10 13
els.selleslach@hetpaleis.be



©Steven Brys

1. general info

hetpaleis will bring **3** technicians, please provide minimum **3** technician (1 stage, 1 lighting, 1 sound);

set-up: **6** h;

strike down: **3** h.

Arrival performers & assistants children(14): **5** h prior to the performance.

Length of the performance: **60** minutes

There is no intermission, and latecomers will not be allowed to enter the auditorium.

Transport & parking

Please provide free parking for a truck/furniture van and a car/minibus.

Truck dimensions: L 500 x W: 230 x H: 235 m.

Facilities:**The venue provides:**

- **on stage:**
 - space for dressing rooms (500W x 125D x 200H m) in the wings
 - 6 headsets (3 stage, 3 auditorium)

- **backstage:**
 - tables (4m) with protection cover to prepare paint and props (preferably near stage)
 - 3 separate dressing rooms en 1 big dressing room for a group of 10 performers & 3 assistants
 - toilet and showers
 - coffee, tea and water
 - fresh fruit and snacks

Catering:

The venue provides 3 healthy lunches (during build-up) or 17 healthy lunches (when performances in the afternoon) and 17 healthy warm meals (crew+cast+assistants). Details about special diets/wishes and exact numbers will be provided later.

2. stage (see stage plot)**Set:**

The set consists of a floor of white flame retardant plastic (12m x 12m).

A flame retardant transparent plastic canvas (7mx5m) is used as a canvas for live action painting during the performance (wasco's, oil pastel crayons and poster paint).

At the end of the performance this plastic canvas is mounted to a metal tube with VELCRO-tape and lifted as a backdrop using two hoists.

The two hoists (250kg) are operated during the performance by the stage manager on stage.

On stage, a scaffold, a ladder, 3 foam blocks, and a flight case are set up:

- scaffold: 200L x 60W x 200H cm;
- A-ladder: 180H cm;
- foam blocks (100L x 100W x 40D cm), placed horizontally and vertically

2 dressing rooms (our own) are set up in the wings for use during the performance.

Dimensions of the largest set piece: dressing room 250L x 125W x 250H cm (folded 250 x 10 cm).

The company provides:

- cleaning machine and cleaning materials
- 2 dressing rooms (250L x 125W x 250H cm)

The venue provides:

- a performance area of at least W: 10 x D: 10 x H: 6 m
 - **please consult in case of doubt; deviations must be discussed in advance**
- black floor: in case the floor is not black, the venue provides taped black marley
- blacks: open stage, possibly with black backdrop (in consultation with the company)
- easily accessible water connection and hose (for cleaning)

3. lighting (see lighting plot)**The company provides:**

- GrandMA2 pc-wing & laptop
- 2x Robe LedBeam 150
- 4x Robe Profile T1
- 1x Fluorescent light 2x 35W/840
- 2x Led inspection light
- 2x Arri HMI Fresnel 2,5kW with barndoor
- 2x shutter/dowser on dmx for HMI Fresnel

The venue provides:

- Lighting material according to the lighting plot
 - o 2x Fresnel 1kW with barndoor
 - o 4x Fresnel 2 kW with barndoor
 - o 6x PAR64 cp 62 1kW
 - o 8x PAR64 cp 61 1kW
 - o 14x PC 1kW with barndoor
 - o 2x Profile DW 1kW
 - o 8x Profile DS 2kW
 - o colour filters: L152, L201, L202, L711, L728
- 2x lighting towers H=1,5m
- 8x floor stands for PAR64
- 1,5m operating desk for the lighting technician next to the sound technician in the auditorium (preferably not underneath the balcony)

4. sound

The company provides:

- sound desk Allen & Heath SQ6
- Akai APC controller and laptop with ableton

The venue provides:

- a FOH in perfect condition
- 2x 12" of 15 " speakers hanging on steels (2m or more) according to the plan
- 2x monitors behind the proscenium opening Stage Right and Stage Left
- surround or 2 speakers at the back of the auditorium
- 1,5m operating desk for the sound technician next to the lighting technician in the auditorium (preferably not underneath the balcony)
- 1 wireless handheld microphone

5. extra's

- proposed working schedule
- stage settings
- lighting plot
- stage plot
- risk assessment

Both the receiving organisation **hetpaleis/Voetvolk** operate in accordance with the most recent safety regulations. Risk assessment is available upon request.

The technical rider is part of the contract between **hetpaleis/Voetvolk** and the organising venue. The provisions of this rider must be followed in order to continue the performance. If exceptions need to be made for any reason, they must always be discussed with **hetpaleis/Voetvolk** in advance.

hetpaleis /Voetvolk reserves the right to make changes to the technical rider in function of the location (restrictions) and the transport options.

Proposed working schedule

1 or 2 performance day(s)

Day 1 Set-up

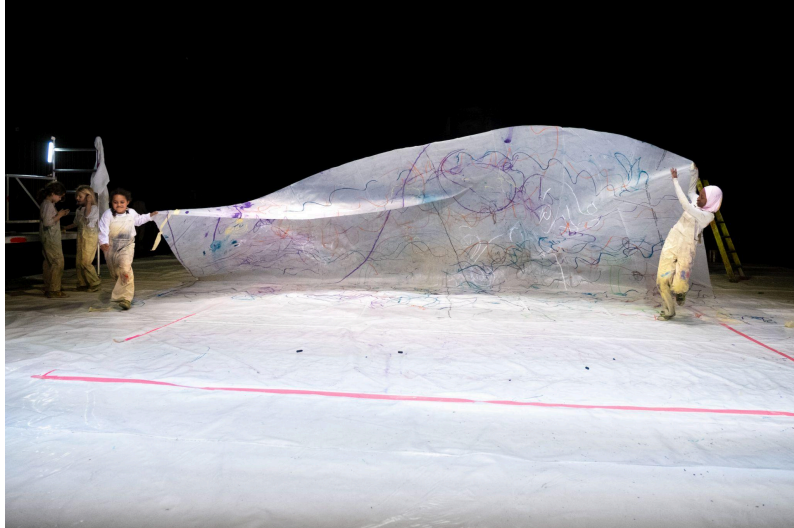
10:00-13:00: set-up: set, lighting, audio
13:00-14:00: **lunch**
14:00-16:00: set-up: set, lighting, audio
18:00-19:00: **dinner**
19:00-22:00: set-up: set, lighting, audio

Day 2 Performance

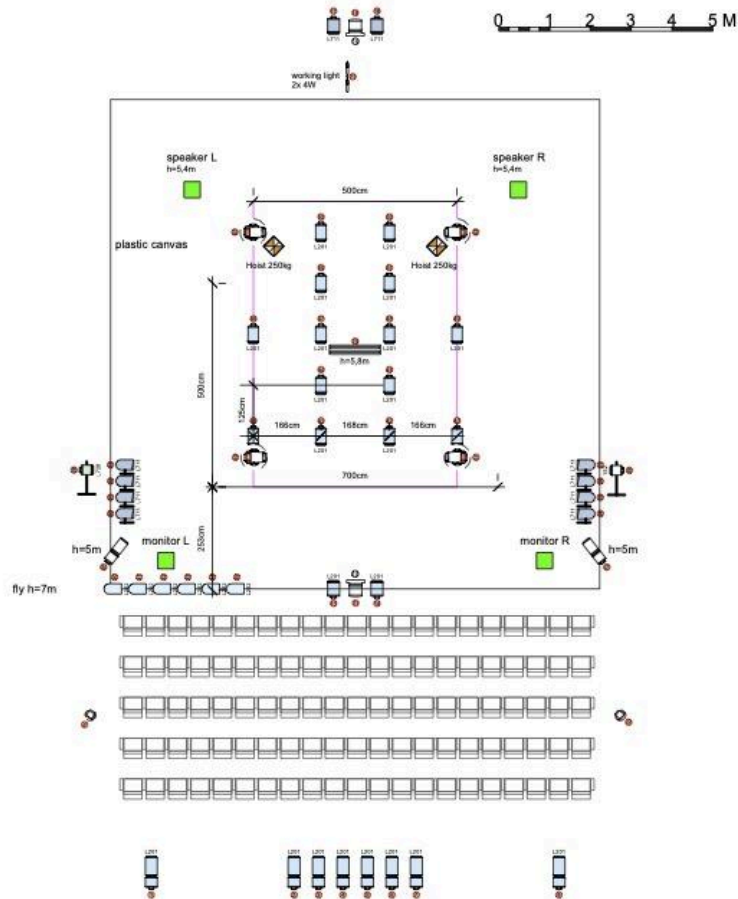
10:00-13:00: technical adjustments: set, lighting, audio
13:00-14:00: **lunch**
14:00-17:00: performers on stage
17:00-18:00: **dinner**
18:00-18:50: last preparations (pre-set, stage cleaning, sound check, etc.)
18:55: house opens
19:00-20:00: performance 1
20:15-23:15: strike down and load in (except if two performances)

Day3 performance

10:00-13:00: technical adjustments: set, lighting, audio
13:00-14:00: **lunch**
14:00-17:00: performers on stage
17:00-18:00: **dinner**
18:00-18:50: last preparations (pre-set, stage cleaning, sound check, etc.)
18:55: house opens
19:00-20:00: performance 2
20:15-23:15: strike down and load in

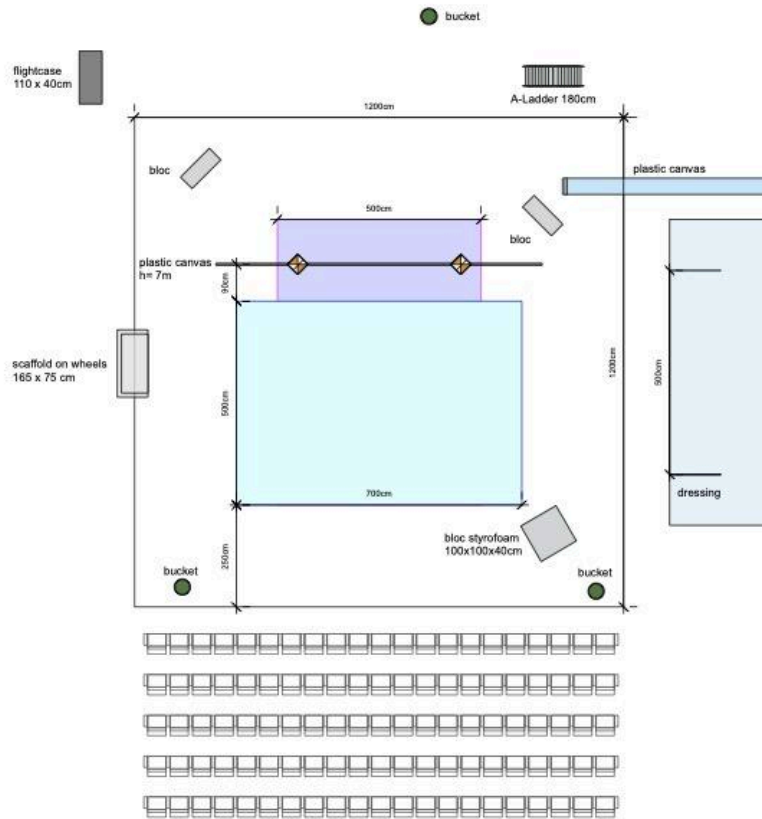



©DannyWillems



KEY	
	Fresnel 1 kW with Bamdoors
	Fresnel 2 kW with Bamdoors
	PAR64 cps2 1 kW
	PAR64 cps1 1 kW
	PC 1 kW with Bamdoors
	Profile DW 1 kW
	Profile 2 kW
	Ari HMI 2.5kW with Bamdoors + DMX shutter Douser
	Fluorescent light 2x 35W/840
	LED Working light 4x4W
	ROBE LEDBeamx 100
	ROBE PROFILE T1

LIGHTING PLOT	
Production	WASCO!
Company	hetpaleis / Voetvolk
	Design: Stef Stessel / Dirk De Hooghe
	26/04/2024



STAGE PLOT	
Production	WASCO!
Company	hetpaleis / Voetvolk
	Design: Stef Stessel
	26/04/2024