

**Technical rider**



PRODUCTION: Linde Raedschelders, +32 478 34 70 72 [linde.raedschelders@hetpaleis.be](mailto:linde.raedschelders@hetpaleis.be)

RESPONSIBLE ON TOUR: Frouke Van Gheluwe, +32 484 77 03 61 [frouke\\_van\\_gheluwe@hotmail.com](mailto:frouke_van_gheluwe@hotmail.com)

Johannes Vochten +32 487 60 21 94 [johannes\\_vochten@hotmail.com](mailto:johannes_vochten@hotmail.com)

Performance duration: 40 mins.

Age: 6

### **Travelling party**

3 technicians + 1 performer

---

### **Access and storage**

Set travels in a Mercedes Axor truck (total length 11m, loading length 8m45) with taillift.

Longest piece: 4m30 (pipes and plastic roll)

largest piece: 2m x 2m20 x 0,27m largest piece (metal floor structure)

Note that much of the show equipment is heavy.

---

### **Space requirements**

L 9m (preferably more!) x W 10m x H 5m (minimum grid height)

We need either lowerable bars or chain hoists to hang the BBCT-grid from

Black stage floor, if not black marley dance floor - preferably laid cross stage - required to cover the complete stage.

Black box around. Maximum depth for the black back curtain: 11m. If the stage is very deep, position of back curtain to determine upon agreement with the technicians. Depends on the position of the blower. This should be installed the company's arrival!

### **Dressing room**

1 dressing room with a shower, soap and towels

Please provide fresh drinks and fresh fruits (bananas! nuts, fresh ginger, honey...),

---

### **Laundry**

Venue should provide an experienced dresser for laundry and repairs if needed.

Laundry needs to be done after two shows:

1 machine load of pants, t-shirts, hoodies, socks, underwear

1 machine load with towels etc to clean the shiny stage floor. Sometimes some ping pong balls need to be washed as well, we bring washing bags for that.

### Crew from the venue / schedule:

2 **hosts** to guide to audience during the performance AND to retrieve any ping pong balls or other props before the audience leaves the venue. After the show the hosts help out with picking up the approx. 3000 ping pong balls.

|               | Chef | Set  | Light  | Sound  | Cleaning crew / volunteers   |
|---------------|------|--|--------|--------|--|
| Build up day  |      |  |        |        |  |
| Morning 9am   | 1    |  | 2      | 2      | someone to lower the grid  |
| Afternoon     | 1    |  | 2      | 2      | someone to lower the grid  |
| Evening 10pm  | 1    |  | 2      | 2      | someone to lower the grid  |
| Show          |      |  |        |        |  |
| Preset 1,5h   |      |  | 2      | 1      | 1 incl mop the entire floor  |
| Show          | 1    |  |        | 1      | 1  |
| Clean up 1h   |      | vacuum cleaning the milk<br>cleaning milk pots<br>cleaning the vacuum cleaner. | 2      |        | 4<br>collect + sort ping pong balls<br>untangle sjaw<br>mop plastic floor, dry and roll up |
| Break down 3h |      |  | 2 / 3h | 2 / 3h | 1 / 2h   |
|               |      |  |        |        | 4 / 1,5h someone to lower the grid   |

starts with 1h clean up like after each show, incl cleaning buckets and guns

everybody waits to pull out cables!

everybody waits with the break down of technical material

grid needs to be lowered and dimx at the booth need to remain in place to clean paint and CO2

when clean up is done:

- prepare flight cases / boxes
- break down floor
- pack up frequency controllers + cabling
- pack up props

only BBCT technicians break down the cabling of the grid, the crew of the house does the clamps, steels, motors.

### Lighting

- Generic lighting plan attached page 6.
  - The lighting can be installed in advance if agreed in mutual consultation.
  - The show tours with a GrandMA to control lighting, and 2 Showtec Easy Fade: 1 on stage that triggers some effects and 1 in the booth. We bring both.
  - The show requires 48 Dimmer channels 2KW
  - Equipment we bring:
    - 18 PAR 64 CP61 (with gels) on towers (height 2m05)
    - 1 ATOMIC 3000 Stroboscope
    - 1 Dataflash
  - Equipment we ask from the venue:
    - 8 PAR 64 CP61 with 201 gels
    - 4 floodlights ACP 1 KW with 201 gels
    - 18 PAR 64 CP62 with 201 gels of which **12 x with 250R** and 6x without 250R
- 

### Sound

The show requires a **Midas M32** (or M32R) digital sound desk or **Beringer X32** - **no substitutes possible**. Please inform us in time to find an appropriate solution if not available.

The P.A. system should have a smooth frequency response from 20Hz to 20KHz with sufficient power and no distortion or outstanding noise. The system shall be capable of evenly covering the entire listening area. All speaker enclosures must be pro audio only! Only industry standards such as L-acoustics, D&B, Coda, Adamson, Nexo, JBL, Meyer will be accepted. All gear must be in 100% working condition, checked prior to our arrival.

#### Auditorium:

In addition to the normal FOH system, the show requires two additional surround speakers each side of the audience.

#### Onstage:

One monitor each side of stage.

#### We bring:

- MOTU sound card
- MacBook Pro
- 1 PZM mic, one build in the set floor
- 1 x SM57
- headset Shure SM35 + Shure QLXD (+ spare)

The sound booth must be situated on the centerline of the auditorium, definitely not in a separate booth.






---

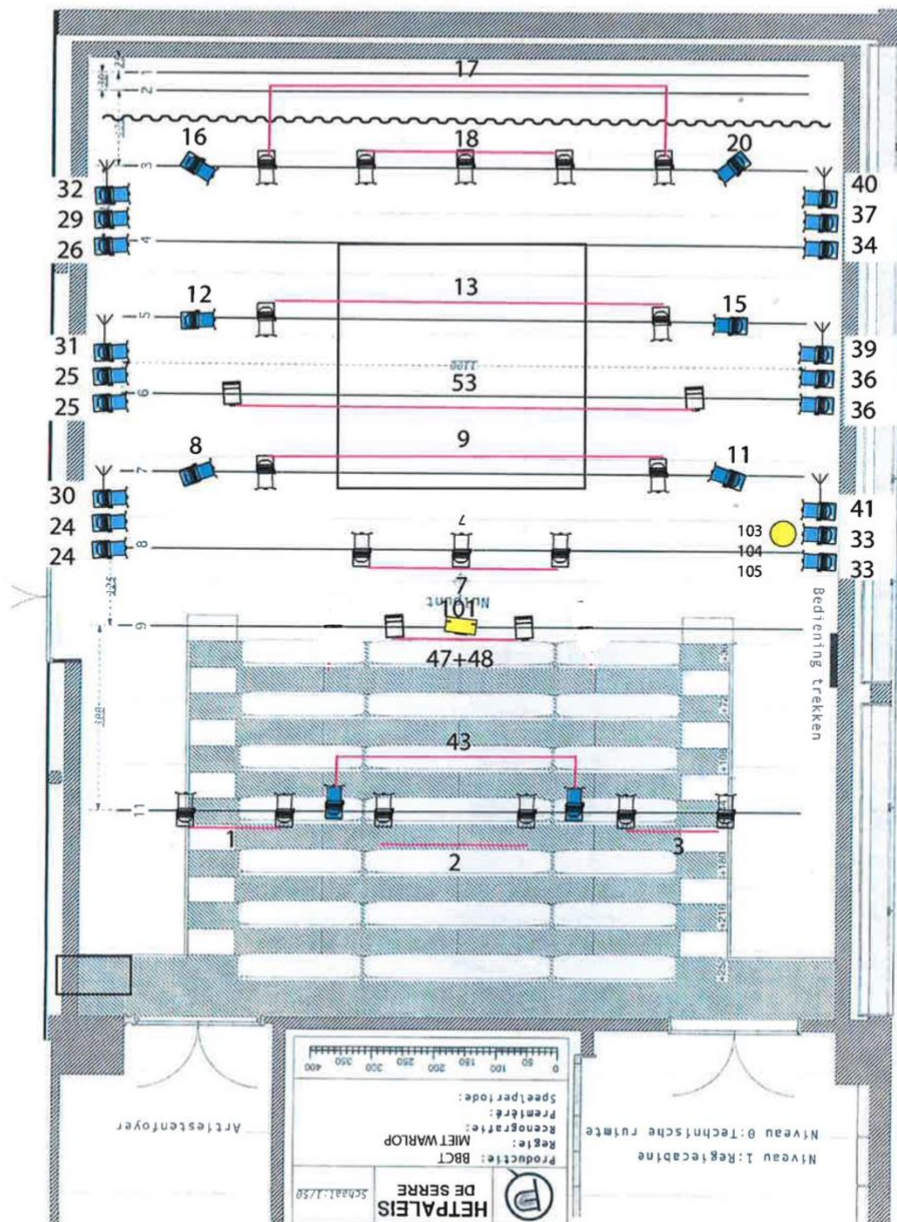
### Staging / power

- 4m x 4m raised platform, consisting of a steel frame base with painted wooden top and sides. The platform has a number of output valves for a high pressure blower installed in it.
- 4m x 4m truss-construction, containing all dropmagnets and effect systems. This has to be rigged on 2 flybars or in fixed grid with **4x ¼ ton motors. We must be able to lower the truss-construction at all times during preset and show.**  
 Front of the grid weighs 100kg  
 Back of the grid weighs 170kg
- please provide steels and clamp all RIGGING MATERIAL to fly our truss structure (under side +/- 3m80)
- The frequency controllers require **2 x 32A or 1x 63A** connection, separate from the rest of the network of the house.  
 We bring a 63A power distro, please provide sufficient cabling.  
 These controllers and all of their cabling need to be strictly separated from all DMX and audio lines to prevent interference. Both are operated from FOH, please advise if the distance FOH-stage is over 40m.
- We bring 2 fans, they need DMX and power
- The show uses 80 litres of powdered milk (that we bring) to create a colour effect on the plastic on our floor – no milk on the stage floor. We need **80l of hot water.**

### Checklist: VENUE MUST SUPPLY

- **Midas M32** (or M32R) digital sound desk or **Beringer X32**  
 Please contact us as soon as possible if this is a problem.
- 1 x 20 litre bottle **liquid CO2** with **diptube** in bottle **PER 2 SHOWS.**
- 80l of **very hot water (from tap)** 30 minutes before show (the boiler needs to be big enough!)
- When fixed grid: 4 x motor for 1/4 ton
- 8 PAR 64 CP61 with 201 gels  
 4 floodlights ACP 1 KW with 201 gels  
 18 PAR 64 CP62 with 201 gels and 12x R250 gels
- Possibility to use washing machine and dryer.

- |  |  |   |
|--|--|---|
|  8 PAR64 CP61<br>+ 2 optional |  1 ATOMIC DM 3000 | <b>FILTERS:</b><br><br>PAR: 32X201_12X201+250<br>PROFILE: 7X201+R132<br>FLOODLIGHT: 4X201<br><br>"BIG BEARS CRYE TOO"<br>MIET WARLOOP |
|  18 PAR64 CP62                |  1 DATAFLASH      |   |
|  |  4 FLOODLIGHT 1KW |   |



### BIG BEARS CRY TOO - STAGE LAYOUT

